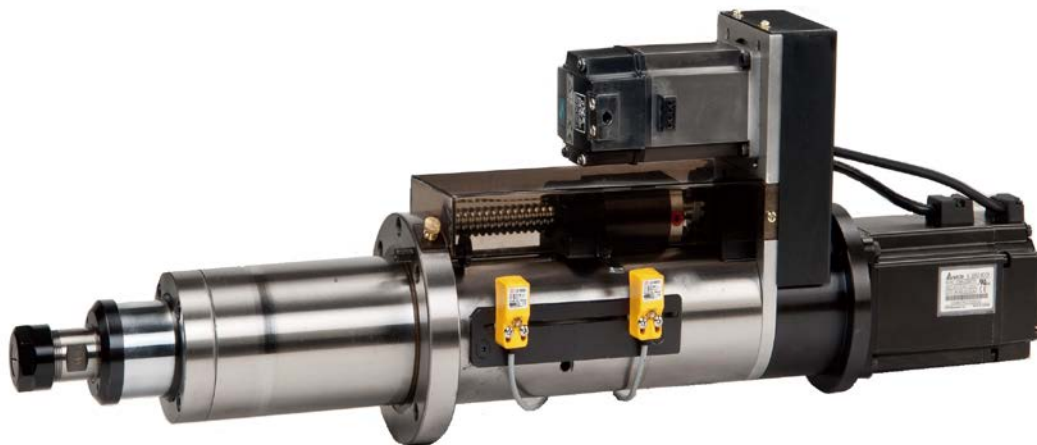
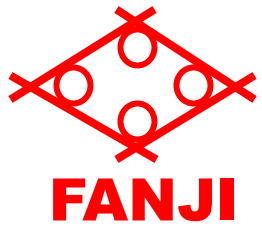


Servo Spindle Unit FD55S-80

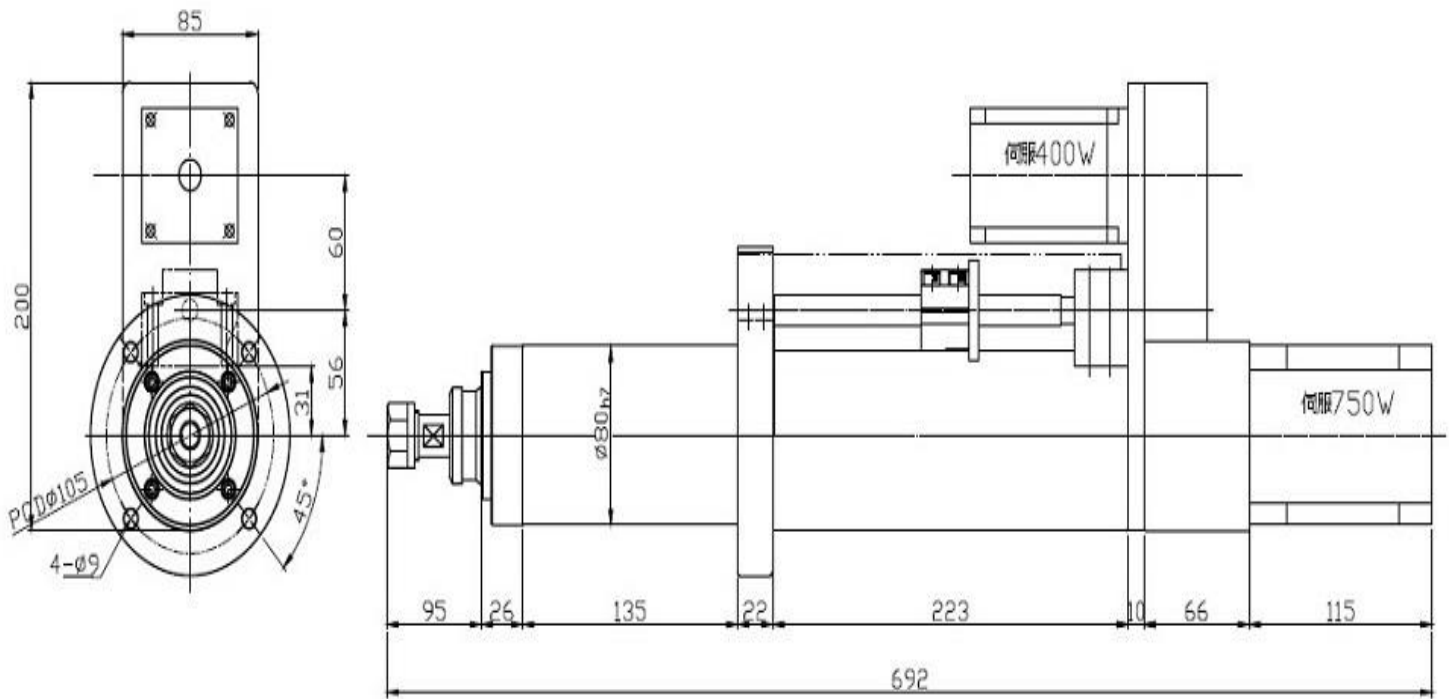
FD55S-80 Specification	
Drilling Capacity	Ø8mm(Mild steel)
Tapping Capacity	M8(Mild steel)
Spindle Nose Type	ER20- Ø13 , JT6- Ø13
Stroke	80mm
Feeding Power	0.4KW(Servo)
Spindle Power	1HP(AC motor);0.75kw(Servo motor)
Max. Revolution/Minute	4,000 rpm
Weight	24kg(FD55SS-servo motors not included) 36kg(FD55S- servo motor not included)



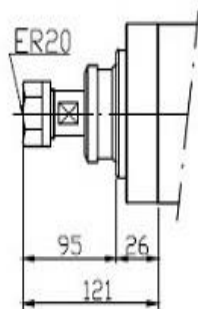


Servo Spindle Unit

FD55S-80



FD55S-80-ER20



FD55S-80-JT6

